



Morpho, Inc. introduces “Morpho Panorama™” Take wide angle picture simply by moving the camera

Tokyo, Japan - July 19, 2012 – Morpho, Inc., the global leader in software image processing solutions for mobile devices, released “Morpho Panorama™.” This product utilizes a technology which generates a panorama picture as if it was taken by a wide angle lens.

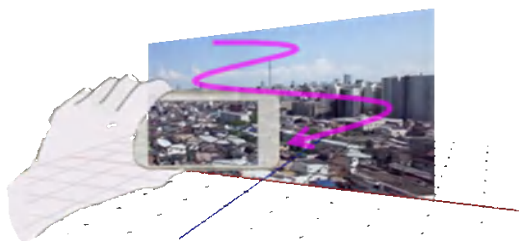
Morpho Panorama

By moving the camera up and down, right and left or following the guide, “Morpho Panorama” generates a wide-angle-like panorama picture with sense of immersion. Normally, simply stitching together pictures taken with a camera freely moving around does not result in natural picture. This is because the depth between the photographer and the object is different between pictures taken. On the other hand, “Morpho Panorama” estimates the distance between the photographer and the object to create input images adjusted to the distance. It then stitches them together to generate a more natural wide angle panorama picture.

Another characteristic of this product is that it treats the object as 3D, so users can enjoy viewing saved images with depth when using a special viewer.

～Now your complete view becomes a picture～
Capture a scene that didn't fit in one picture before.

Capture the scene freely



* “Morpho Panorama” is trademark of Morpho, Inc.

About Morpho, Inc.:

Established in 2004, Morpho, Inc. has built substantial brand recognition in the field of software image processing for mobile devices. Customers utilizing Morpho, Inc.'s software technologies include carriers, processing platform providers and mobile device manufacturers making the company a global player in mobile imaging. For more information visit

<http://www.morphoinc.com/en/> or contact m-press@morphoinc.com.